

CHIFF

Children **in** Families
FIRST

WHAT IS THE CHIFF BILL?



TARGETS WAYS TO PRESERVE THE MOST VULNERABLE FAMILIES

This bill establishes an office in the Department of State to implement effective child welfare systems.



BRINGS ORPHANS INTO FAMILY CARE

When a child is displaced, CHIFF would work to establish them in a safe, permanent and loving family.

WHAT CHIFF IS NOT...



ASKING GOVERNMENT FOR MORE MONEY

This bill would utilize the current budget to reduce the number of children that are in need of assistance or protection.



A NEW IDEA

PEPFAR and the office for child trafficking were both created in an identical manner to deal with AIDS and child trafficking issues.



AN INTERNATIONAL ADOPTION BILL

This bill is founded on the belief that every child belongs in a family. While not specifically about international adoption, it does include international adoption as an option, should family preservation, kinship adoption or domestic adoption fail.



A CHILD WELFARE BILL

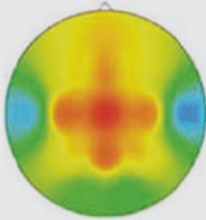
This bill does not seek to tell countries how to care for vulnerable children, but would utilize funds to support and partner with governments to place children into families.

WHY WE NEED TO PASS IT

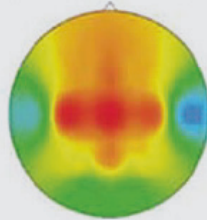
More than 11 million children are living in institutions today.

BEING RAISED BY AN INSTITUTION INSTEAD OF A PARENT DAMAGES A CHILD'S BRAIN

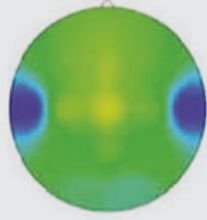
Red or orange indicate more activity.



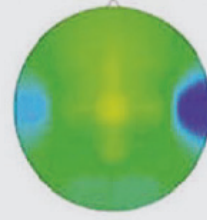
Never Institutionalized



Placed in Family BEFORE 24 Months



Placed in Family AFTER 24 Months



Remained in Orphanage

CHILDREN WITHOUT FAMILIES ARE



AT HIGHER RISK FOR TRAFFICKING, FORCED LABOR & SEXUAL ABUSE



MORE LIKELY TO ENGAGE IN CRIME



LESS LIKELY TO SUCCEED IN SCHOOL



LESS LIKELY TO FORM HEALTHY RELATIONSHIPS AS ADULTS



THERE ARE **NO LARGE NGOs** ACTIVELY FOCUSED ON PLACING CHILDREN INTO FAMILIES, **ANYWHERE** IN THE WORLD

U.S. government funded programs are **more likely** to focus on these children after they become **victims** of trafficking, abuse or exploitation.

CHIFF
WOULD CHANGE
THIS